

HOW TO REORDER THE STAYFIX FIXATION DEVICE

To order additional StayFIX Fixation Devices, contact your hospital pharmacy or the designated home care agency assigned to your care. You may also contact Merit Customer Service, toll-free at 1-800-356-3748.

StayFIX Fixation Devices come in two sizes:

- StayFIX Small (680ME) is for devices 5F-14F.
- StayFix Large (685ME) is for devices 12F-22F.

Your StayFIX Fixation Device size has been indicated on the back of this pamphlet. The appropriate box will be checked to indicate the product size you will need.

If you do not know the size of your device or if the boxes have not been checked, contact your healthcare provider for help determining the appropriate StayFIX Fixation Device size.

CONTACT YOUR HEALTHCARE PROVIDER IF YOU NOTICE ANY OF THE FOLLOWING:

- EXCESS LEAKAGE
- SORENESS
- MOVEMENT OF THE IMPLANTED DEVICE

StayFIX Fixation Device Product Sizes:



StayFIX Small (680ME) Devices 5F-14F



StayFix Large (685ME) Devices 12F-22F

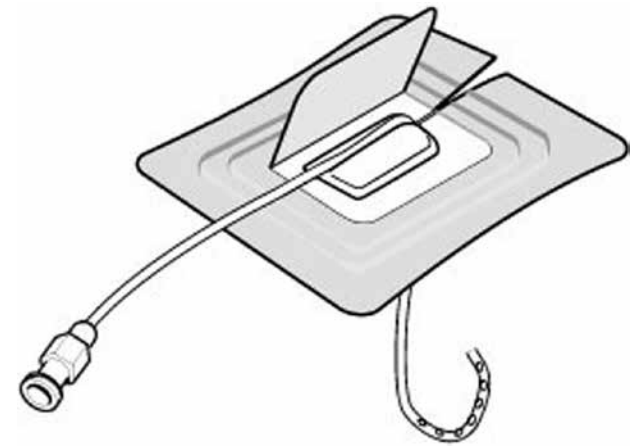
If you need assistance or if you have any questions regarding our products, please call Merit Medical Customer Service toll-free 1-800-356-3748



Merit Medical Systems, Inc.
1600 West Merit Parkway
South Jordan, Utah 84095
1-801-253-1600
Toll Free 800-35-MERIT
www.merit.com

StayFIX[®]

Fixation Device



PATIENT CARE PAMPHLET

To make it easier for you to take care of your implanted device at home, it has been secured to your body with a StayFIX Fixation Device.

THE STAYFIX FIXATION DEVICE HAS BEEN DESIGNED TO

- Hold your implanted device in place
- Allow the implanted device to lie flat
- Keep your implanted device from kinking
- Maintain comfortable yet secure adhesion

Your healthcare provider will provide specific details on the daily care and maintenance of your implanted device.

USING THE STAYFIX FIXATION DEVICE AT HOME

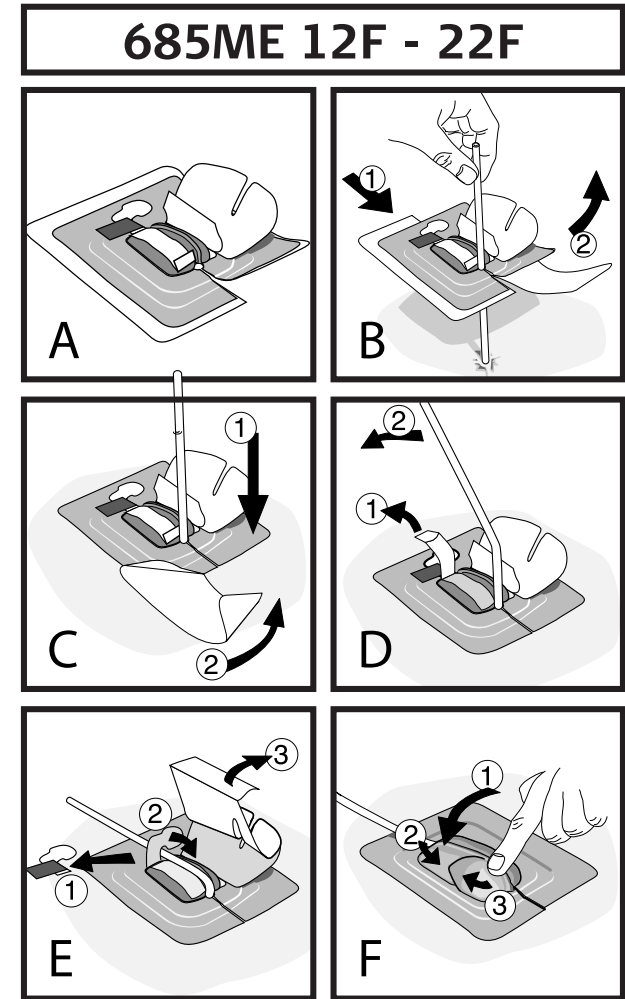
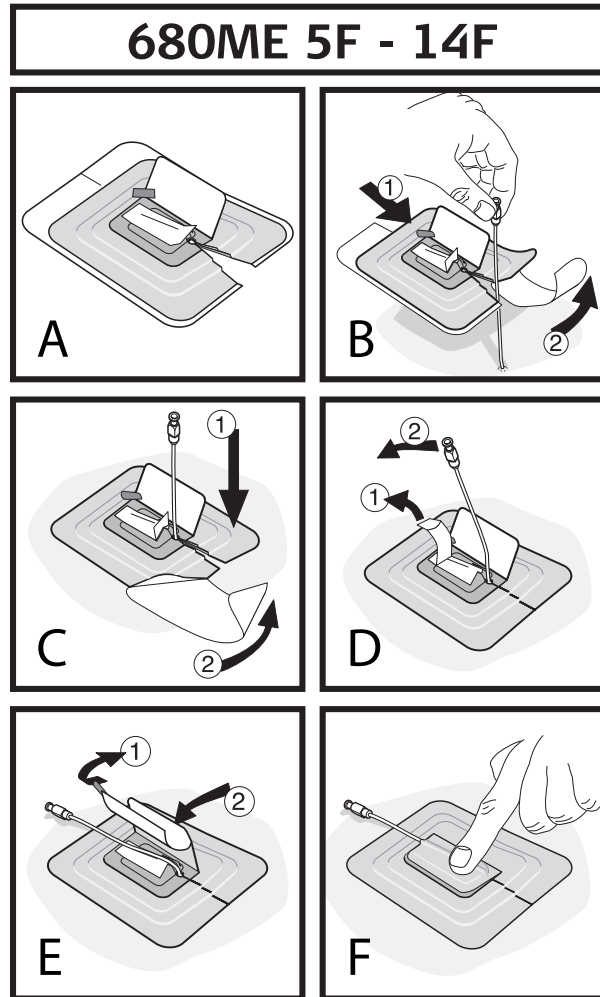
The StayFIX Fixation Device should remain secure for up to seven days. After seven days (sooner if the StayFIX Fixation Device becomes loose for any reason) you need to remove the old StayFIX Fixation Device and replace it with a new one.

Inspect the StayFIX Fixation Device daily to make sure that it is still holding the implanted device securely. If the StayFIX Fixation Device becomes loose, remove it and replace it with a new StayFIX Fixation Device.

The StayFIX Fixation Device can get wet, but avoid soaking in water for an extended amount of time. Avoid touching the StayFIX Fixation Device until it has dried completely. Again, if the StayFIX Fixation Device becomes loose, remove it and replace it with a new StayFIX Fixation Device.

STAYFIX FIXATION DEVICE APPLICATION INSTRUCTIONS

To adhere effectively the StayFIX Fixation Device must be applied to a clean dry skin surface. Be sure to follow your healthcare provider's instructions for cleaning and managing the area where the implanted device exits your body.



To remove the StayFIX Fixation Device, reverse these steps.